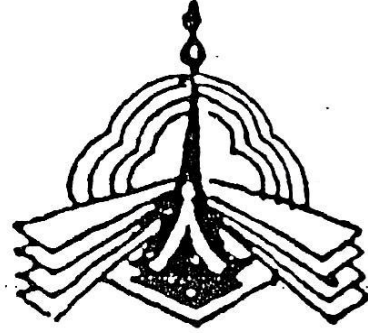
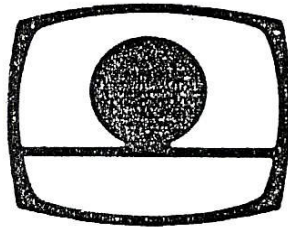


PAKISTAN TELEVISION CORPORATION
LIMITED DACCA



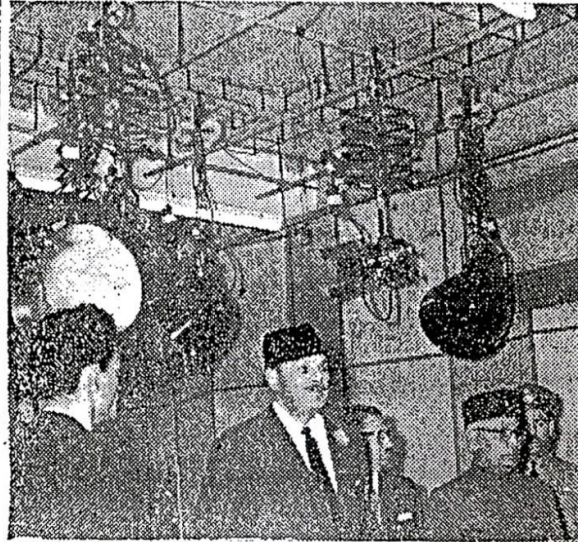
FIRST MONOGRAM OF DHAKA TELEVISION

বাংলাদেশ টেলিভিশন



MONOGRAM OF BANGLADESH TELEVISION

INAUGURATION OF THE FIRST TV STATION IN DHAKA



Field Marshal Ayub Khan inaugurated the TV station on Friday. On his left is Governor Abdul Monem Khan. SEE ALSO PAGE 6

TV Station Opens In Dacca

The first television station in East Pakistan was inaugurated in Dacca on Friday evening by President Ayub Khan who described the occasion as "yet another step forward in the advancement of Pakistan," reports APP.

While a select gathering of the Governor, the Central Ministers, high civil and military officials and leading citizens were present at the inaugural function held on the lawns of the towering Dacca Improvement Trust building, thousands watched the programme sitting in their homes, clubs and other institutions on the T.V. sets.

In a brief address the President said that the introduction of T.V. in Pakistan would bring about closer integration of the people by bringing home to them the life that Pakistanis were living in different parts of the country.

He said that once the ignorance about each other was removed, a sense of understanding would emerge and a good deal of sympathy and affection would develop among the people.

President Ayub said that he would like to see that the entire country was covered with a network of T.V. during the course of next four to five years.

He said TV was introduced in this country to serve two national objectives—the unification of our people and to make our society scientifically advanced and progressive. He maintained it was imperative to reach our people and draw their attention to the requirements and needs that went towards the attainment of those objectives.

He said "We want to use this TV not entirely for the purpose of amusement, but mainly for educative reasons." He added that it was to help stimulate interest of the people in new things of life—scientific and technical.

Welcoming the President, Mr. Altaf Gauhar, Secretary, Ministry of Information and Broadcasting said that TV had been introduced in this country with twin objectives—an instrument of national integration and a medium of education.

He recounted the handicaps and difficulties encountered in the installation of the station. He said that practically they had no engineers who could claim any technical knowledge of this new medium.

Mr. Gauhar expressed his gratitude to the Japanese technicians, who, he said had trained our young engineers. He hoped that in a few years' time the entire TV system would be manned by Pakistani technicians.

Earlier the Chairman of the Nippon Electric Company, Mr. T. Watanabe, expressed the hope that the two pilot stations with their trained Pakistani staff would form the nucleus of the eventual television services covering the whole of Pakistan.

He said they had been training Pakistani staff both here and in Japan in all facets of operation of television equipment and would continue to do so as long as it was necessary.

PAKISTAN OBSERVER
DACCA, FRIDAY, DECEMBER 25, 1964

Dhaka Television Station was on the Air Starting
First Transmission with Inaugural Greetings in
Bengali Language "Amader Subechha Nin" (Please accept
our Good Wishes) on December 25, 1964 at 6.00 P.M.



Thousands of viewers will watch President Ayub Khan inaugurate the pilot television station in Dacca today at 6 p.m. Already three hundred TV sets have been sold and two hundred distributed among various social organisations and educational institutions.

The Dacca station will be on the air with a greeting in Bengali. It may be men-

tioned here unlike Radio Pakistan, Dacca; the TV programmes will be broadcast mostly in Bengali, a commendable initiative. The Lahore TV station on the other hand will have telecast mostly in Urdu and English. | Meanwhile Mr. T. Watanabe, President Nippon Electric Company (NEC) flew into Dacca on Thursday from Karachi for inauguration of

television centre in Dacca.

Mr. Watanabe gave a dinner in the evening in honour of Mr. Altaf Gauhar, Secretary for Information, Government of Pakistan and other high officials of the Department of Information.

Earlier Mr. and Mrs. Watanabe attended a lunch given by Mr. Jamil Chowdhury, Station Manager, Dacca Television Centre.

The First Television Station (DIT Building , Dhaka) in erstwhile East Pakistan (Now Bangladesh) was inaugurated in December 1964.



Bangladesh Television Bhaban, Rampura, Dhaka



A Partial view of Dhaka, the Capital City of Bangladesh



Research Area

**50 Years of Bangladesh Television, 1964 -2014
(Monogram)**



First Day Cover: 50th Anniversary of Bangladesh Television 1964-2014



Artists rendering songs at a cultural show of Bangladesh Television



Cultural Function of Bangla New Year Pahela Boisakh



BTV'S TRANSMITTING AND RELAY STATIONS WITH CHANNEL FREQUENCIES

Station	Channel No.	Channel Frequency
Dhaka	9	202-209 MHZ
Chittagong	5	174-181 MHZ
Khulna	11	216-223 MHZ
Natore	8	195-202 MHZ
Sylhet	7	188-195 MHZ
Rangpur	6	181-188 MHZ
Mymensingh	12	223-230 MHZ
Cox's Bazar	10	209-216 MHZ
Rangamati	8	195-202 MHZ
Satkhira	7	188-195 MHZ
Noakhali	12	223-230 MHZ

CLASS OF LICENCE AND RATES OF FEE

SL. No.	Class of License	Annual Fee (Tk.)
1.	Black & white TV set (Residential)	125
2.	Coloured TV set (Residential)	300
3.	V C R set	500
4.	TV Assembler/Commercial License	1,600
5.	Repairing Commercial Organisations	900
6.	TV Set used for commercial purpose (Black & white and colour)	900

Source: Bangladesh Television-Er-Panchish Bachar (25 years of Bangladesh Television), silver Jubilee Publications, (Dhaka, Moni Printers, 1989) p. 233

Characteristics of 625 lines, PAL-B TV transmission system

No. of lines	625 lines
Field frequency	50 HZ
Video bandwidth	5MHZ
Total vision bandwidth(incl, guardhand)	6.25 MHZ
R. F. Channel bandwidth	7MHZ
Difference between vision carrier and a sound carrier	5.5 MHZ
Width of VSB	0.7 MHZ
Type of vision modulation	C3F (old A5C)
Polarity of vision modulation	Negative
Type of sound modulation	F3E (old F3)
Frequency deviation sound	50 KHZ
Ratio of e. r. p. of vision/sound	10:1
F. M. sound bandwith	750KHZ
Class of emission (Vision)	6M25C3F
Class of emission (Sound)	750KF3EGN

International Awards won by Bangladesh Television

Programme	Producer	Award
'KA-AR-KHA' (Childrens' Programme)	Sakina Sarwar	Japan "Special International Prize"-1977
'PANTABURI' (Childrens' Programme)	Kazi Quyyum	Japan "Special International Prize"-1979
'HASHI-KHUSHI' (Childrens' Programme)	Al-Monsur	ABU Prize-1981
'LATHERISM' (Documentary)	M. Hamid	National Film Award International Agricultural Film Festival-1983/FRG
'SURVIVAL' (Drama)	A. A. Mamum	Grprix Futura/Transtel-1983, FRG
'TOMADER JONNO' (Vocal Songs by Runa Laila)	Khaleda Fahmi	RADUGA-1983 USSR
In Recognition to the Comprehensive coverage of 1988 floods in Bangladesh	BTV-News	ASIAVISION AWARD-1988 Australia

CHRONOLOGY OF MAJOR EVENTS IN TV BROADCASTING SYSTEM BANGLADESH

- October, 1963 - First survey for establishing a TV-centre at Dhaka on commercial basis.
- April, 1964 - First TV Broadcasting System Planning as a Pilot Project.
- October 17 to November 28, 1964 - Equipment Installation at the then DIT Building as NEC Pilot Television.
- November 26, 1964 - First Test Transmission as Pilot TV.
- December 25, 1964 - Official Inauguration of Dhaka Television.
- First TV Transmitter with 300 Western output was installed at 20 M TV Tower on DIT Building.
- First Transmitting radius was 16 KM.
- First Live Programme: A musical programme presented by Ferdousi Rahman.
- February, 1965 - First News bulletin went on the air.
- 1968 - Erstwhile Government of Pakistan imposed ban on telecasting Tagore Songs (Rabindra Sangeet).
- September 14, 1968 - Installation of 6KW TV Transmitter at Rampura TV Complex.
- September 18, 1968 - First Test Transmission from 6KW TV Transmitter.
- September 25, 1968 - Rampura TV Complex Foundation was laid.
- October 27, 1968 - The 6KW Transmitter Came in operation officially.
- 1970 - First TV-Receiver apparatus Licence Rule Introduced.

- December 17, 1971 - First Television Programme transmission was started in independent Bangladesh. Freedom Fighter Fateh Ali Choudhary made the announcement.
- March 6, 1975 - Vice-President Syed Nazrul Islam formally inaugurated the TV building at Rampura, Dhaka.
- October 5, 1976 - National TV Children Award (Notun Kuri) was introduced.
- 1976 - National Debate Award was introduced.
- October, 1977 - First BTV transmission through satellite via Betbunia Earth Station (Japanese Plane hijacking incident at Dhaka was shown on BTV for 17 hours without any break).
- 1978 - BTV became the permanent member of ABU (Asia-Pacific Broadcasting Union).
- January 7, 1980 - First Test transmission from Channel-9 TV transmitter.
- January 10, 1980 - Channel No. 9 TV transmitter officially came into operation.
- March 14, 1980 - Inauguration of BTV's experimental morning transmission.
- April 1, 1980 - Introduction of Eurovision News Events in BTV's news casting.
- July 1980 - First publication of TV-Magazine "TV Cue" (Presently "TV-Guide").
- August 24, 1980 - Introduction of BTV's experimental second channel transmission by 6KW TV transmitter.
- November 29, 1980 - First colour test transmission.
- December 1, 1980 - BTV switched over to colour TV system.
- April 1, 1982 - Discontinuation of morning transmission.
- January 16, 1984 - Introduction of Asia Vision News Events in BTV news.
- January 1, 1985 - Discontinuation of BTV's second channel transmission.
- July 3, 1987 - Introduction of Friday morning transmission.

INTERNATIONAL

- November 2, 1920 – World's First Radio Broadcasting station started functioning on November 2, 1920 with 100 Western output power by KDKA station, Petersburg, USA.
- October 2, 1925 – J. L. Baird succeeds in mechanical TV experiment.
- January 1, 1927 – BBC was constituted under Royal Charter.
- April 7, 1927 – Bell Telephone Lab (US) demonstrated Wired TV-experiment between Washington D. C. and New York.
- June 27, 1929 – Bell Lab experiments with Wired Colour TV.
- August 22, 1932 – BBC conducts first TV-experiment (30 scanning lines).
- July 1, 1934 – US Federal Communication Commission (FCC) was established.
- March 22, 1935 – World's first regular TV broadcasting began in Berlin (180 lines system).
- January 1, 1938 – World's first magnetic Tape recording system was used for radio broadcasting system in Germany.
- November 26, 1963 – First World TV Festival was held in London.
- May 17, 1965 – First Live Colour TV-Broadcast from London to USA via "Early Bird".
- June 28, 1965 – COSMAT Starts functioning between Usa and Europe via "Early Bird".
- June 11, 1967 – First PAL (Phase Alternating Lines) colour TV system started by the FRG.
- October 1, 1967 – First SECAM Colour TV system was started by France and Soviet Russia.

* Source: BTV-Profile (Facts and Figures of BTV) and "Yapan" a Souvenir of TV Kallyan Samity, 1989.

FIRST IN BANGLADESH TELEVISION

- First General Manager of Bangladesh Television, Jamil Choudhury
- First duration of TV's programme transmission was for half an hour
- First programme Director, Kalim Sharafi
- First Singer in Television, Begum Ferdousi Rahman
- First Programme of Television was telecast from DIT Building (Ground floor of present RAJUK)
- First TV Centre Engineer, Khaled Salahuddin
- First TV Programme Producer, M. Manirul Alam
- First Accounts Chief of TV, Md. Akmal Khan
- First announcer of experimental TV, Kalim Sharafi
- First two cameras were used in TV

- First camera in TV was handled by Rafiqul Bari Choudhury
- First Drama in TV was EK TALA DOTALA (Ground Floor and First Floor)
- First writer of Drama, Munir Choudhury (EK TALA DOTALA)
- First producer of TV Drama, Manirul Alam
- First News Reader in Bengali, Humayun Choudhury
- First News Reader in English, Alam Rashid
- First Programme Announcer, Begum Hena Kabir
- First announcer in TV Services, Mordekai Kohen
- First humorous Drama 'TRIRATNA'
- First serial Drama in Bangladesh 'NUTUN BARI'
- First monthly Drama 'BARA DIDI' Written by Sarat Chandra
- First Colour Drama 'SAEI CHOUKH'
- Outdoor shooting of (VTR) first Drama entitled 'SHAHJADEER KALO NEKAB'
- First Chorus song of children participated by Shisu-kishore artistes Shimul Billah, Sabina Yasmin, Shanaj Rahmatullah, Dinu, Linu, Minu Billah etc.
- First TV Dance artiste, Mandir Nandi
- First Quiz Programme 'DADHAR ASAR'
- First Science based magazine Programme 'GHAROA'
- First serial Thriller Third Man, Four Just Man
- First imported foreign programme, Third Man Four Just Man
- First Programme Announcer immediately after liberation of Bangladesh, Sarkar Firozuddin
- "RAKTE VEJA SHAPLA" First Drama of a long duration based on War of liberation
- Price of First TV set was fixed at Rs. 900/-
- In 1965, there were 500 TV sets at Dhaka
- First duration of programme transmission of BTV was three hours
- Weekly Holiday was on Monday during the initial period of TV
- First Relay Centre was established in Natore
- Documentary Film Latherism got first International Award for BTV
- State Bank of Pakistan compelled to receive TV cheque written first in Bengali language
- First cricket match held between Pakistan and New Zealand, was shown by TV direct from the Stadium in 1969
- Running Commentaries were given by Shahid Lalu Rahimuddin and Toufik Aziz Khan
- First News Editor, Abdur Razzaq Choudhary
- First News Producer, A. Z. M. Haider

PROGRESSIVE TV-COVERAGE IN BANGLADESH

Population wise				Area wise		
Year	Total population (million)	Population covered (million)	Percentage covered (%)	Total area (sq. Km)	Area covered (sq.Km)	Percentage covered (%)
1964	65	0.5	0.77	1,42,331	8,407	6
1969	74	4.5	6.08	„	13,870	9.7
1974	80	4.5	6.08	„	13,870	9.7
1979	89	6.3	67	„	92,211	64.78
1984	97	7.8	80	„	112,533	79.06
1989	110	7.8	80	„	112,533	79.06

Source : BTV Profile, Facts and Figures on Bangladesh Television, Silver Jubilee 1964-1989, 25 Years of Bangladesh

Geographical Country-ordinates of BTV Transmitter sites (in degrees & minutes)

Station Dhaka (Main Station)		Latitude 23 ⁰ - 36 [/] N	Longitude 90 ⁰ - 18 [/] N
1.	Chittagong	22 ⁰ - 24 [/] N	91 ⁰ - 48 [/] E
2.	Khulna	22 ⁰ - 48 [/] N	89 ⁰ - 40 [/] E
3.	Sylhet	24 ⁰ - 48 [/] N	91 ⁰ - 54 [/] E
4.	Natore	24 ⁰ - 24 [/] N	89 ⁰ - 0 [/] E
5.	Noakhali	22 ⁰ - 48 [/] N	91 ⁰ - 06 [/] E
6.	Mymensingh	25 ⁰ - 18 [/] N	90 ⁰ - 24 [/] E
7.	Rangpur	26 ⁰ - 21 [/] N	89 ⁰ - 18 [/] E
8.	Rangamati	22 ⁰ - 43 [/] N	92 ⁰ - 8 [/] E
9.	Cox's Bazar	21 ⁰ - 33 [/] N	92 ⁰ - 0 [/] E
10.	satkhira	22 ⁰ - 43 [/] N	89 ⁰ - 5 [/] E

N. B.: The above figures were arrived at with the help of a map of Bangladesh constructed on scale 1:1,000,000 or 11 inch to 15.783 miles.

VIEWERSHIP STATISTICS

Total Estimates TV Sets	:	6,18,002
Average Viewership per Set	:	10 persons
Total average Viewership	:	61,80,020

BTV's PROGRAMME SEGMENTS

SEGMENTS	PERCENTAGE	PROGRESSIVE	YEARS TRANSMISSION
Religion	6.25	1984-74	3 Hours daily
Education	4.60	1975	4 Hours daily
Children	6.70	1976-77	5 Hours 30 Minutes daily
Drama	6.30		
Music	7.00	1979	6 Hours daily
Dance	4.00	1980	7 Hours daily including 2 nd Channel Transmission
Science & Technology	1.65		
Health & Family Planning	4.77	1981	13 Hours 30 minutes daily including 2nd channel morning transmission
Magazine	2.85		
Development	5.40	1982	10 Hours 45 minutes daily including 2nd channel transmission
Sports	6.35		
News & Current affairs	15.80	1983-89	7 Hours 45 minutes daily including Friday extended transmission
Announcement & Slogans	2.33		
Commercials	5.00		
Foreign Films & Video Tapes	21.00		

Percentage of BTV Programmes:

- a. Local Programmes : 79%
- b. Imported Programmes : 21 %
(Films & Video Tapes)

Present Weekly Transmissi

: 53 Hours 45 minutes

BT World

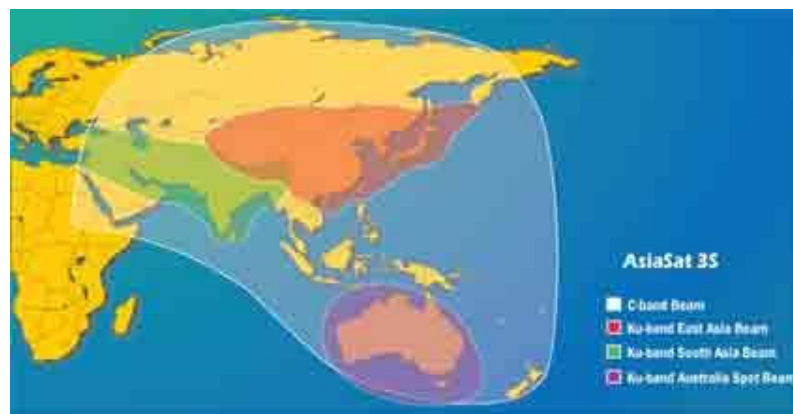
BTV has flown in the Satellite-Air through Test Transmission from the 24 th February 2004 as BTV World with the following Parameter:

Satellite	AsiaSat- 3S
Band	C Band
Bandwidth	15 MHz
Orbital Position	105.5 0 East
Polarization	Vertical
Symble Rate	11.3946 MSymb/sec
Transponder	3V
Down Link Frequency	3710.5 MHz
Encoding	MPEG-2, 4:2:0/4:22 Mp@ML
Modulation	QPSK
FEC	3 / 4

The Foot Print of BTV World is a quite large one. It is spread- in the East from the Sea of Japan; to the West up to Cyprus of (Turkey) & in the South from New zealand-Australia to the North; crossing Mongolian Plateau & the Great Siberian Plain up to Tundra region of Russia.

The Foot-print of BTV World covers the following regions :-

- Numerous small Islands of Micronesia area of Philippine Sea of Pacific Ocean region
- The Islands of the total Melanesia area of Oceania region
- Few Island Countries of Polynesia region
- Total region of Asia
- All countries of Middle East region
- Few countries of Africa



The accumulated numbers of Human settlement are approximately 100. Japan, Korea, Taiwan, Hong Kong, People Republic of China, Mongolia, Vladivostok (Russia), Nepal, Bhutan, India, Pakistan, Afghanistan, Iran, Iraq, Syria, Jordan, Kuwait, Qatar, Bahrain, Oman, Saudi Arabia, Yemen, Turkey, Armenia, Libya, Egypt, Eritrea, Ethiopia, Somalia, Sudan, New Zealand, Australia, New Guinea, Solomon Island, New Caledonia Island, Tonga Island, Cook Island, Funafuti Island, Ellice Island, Nawru Island, Fiji Island, Indonesia, Malaysia, Brunei, East Indian Islands, Sri Lanka, Maldives Islands, Philippine, Palm Island, Guam Island, Marshall Island, Vietnam, Laos, Cambodia, Thailand, Myanmar, Caucasus, Ajarbijan, Somorkhand, Tashkent, Moscow & Great Plain of Siberia up to Tundra region are the prominent human habitation.

The signal of BTV World can be received *free of cost* by any standard of PAL-B, STVRO & can be projected by any body, any where, any time without any prior permission from BTV World.

(*To use for data & future reference BTV authority will pay best THANKS to the Recipient / User if they kindly inform about them by the Fax-88-02-831-2927 or Website- URL : [http:// www.btv.gov.bd](http://www.btv.gov.bd)*)

BTV World is the extension of BTV (Terrestrial) in the field of International Broadcasting service.

BTV (Terrestrial) & BTV World have got 4 parts of transmission schedule :-

- 07:00 am (Local time+6 UTC) to 09:00 am everyday: [BTV (Terrestrial) + BTV World].
- 09:00 am to 12:00 pm everyday:[BTV World only].
- 12:01 pm to 12:01 am everyday: [BTV (Terrestrial) + BTV World].
- 12:01 am to 07:00 am everyday:[BTV World only].

On Friday the 1 st part of the transmission is simultaneous from BTV (Terrestrial) & BTV World, begin at 07:00 am & carried up to 12:01 pm. The 2nd part of the transmission is only from BTV World begins at 12:01 pm & continues up to 03:00 pm. The 3rd part is a simultaneous transmission of BTV (Terrestrial) & BTV World begin at 03:00 pm & close at 12:00 am. The 4th part is a solo transmission of BTV World starts at 12:01 am & runs up to 07:00 am. In a gist BTV (Terrestrial) & BTV World - are On-Air around the clock from 07:00 am to 07:00 am; for 24 hour with out any rest for a second.

BTV World is intended to extend its collaboration of reciprocal exchange of Programmes of non-discrepant quality with any Satellite Channel in the World. BTV cherishes the committed Love for the Country, its Land, Society & People. Keeping this motto in mind; BTV World takes partial feed from BTV (Terrestrial) to serve & to slacken off the satisfaction of the Bangladeshi immigrant or dwellers of abroad as well as the International viewers / friends.

Each & every Programme of BTV { as well as BTV World } has got some notion to serve its target audience. BTV utterly emphasize on Info-tainment & Edu-tainment than that of; so called currently trend set Entertainment; in other ward- Biz-tainment.

BTV feels the duty to flourish & project the achieved Tradition, Heritage, Cultural progress, Socio- Economic environment of its Nation to the contemporary modern World through its International wing- BTV World .

http://192.185.168.156/~btvgov/index.php?option=com_content&view=article&id=337&Itemid=129. Retrieved on 30.06.2016

Bangladesh Television Coverage Map



News Presenters in the News Room of Bangladesh Television

