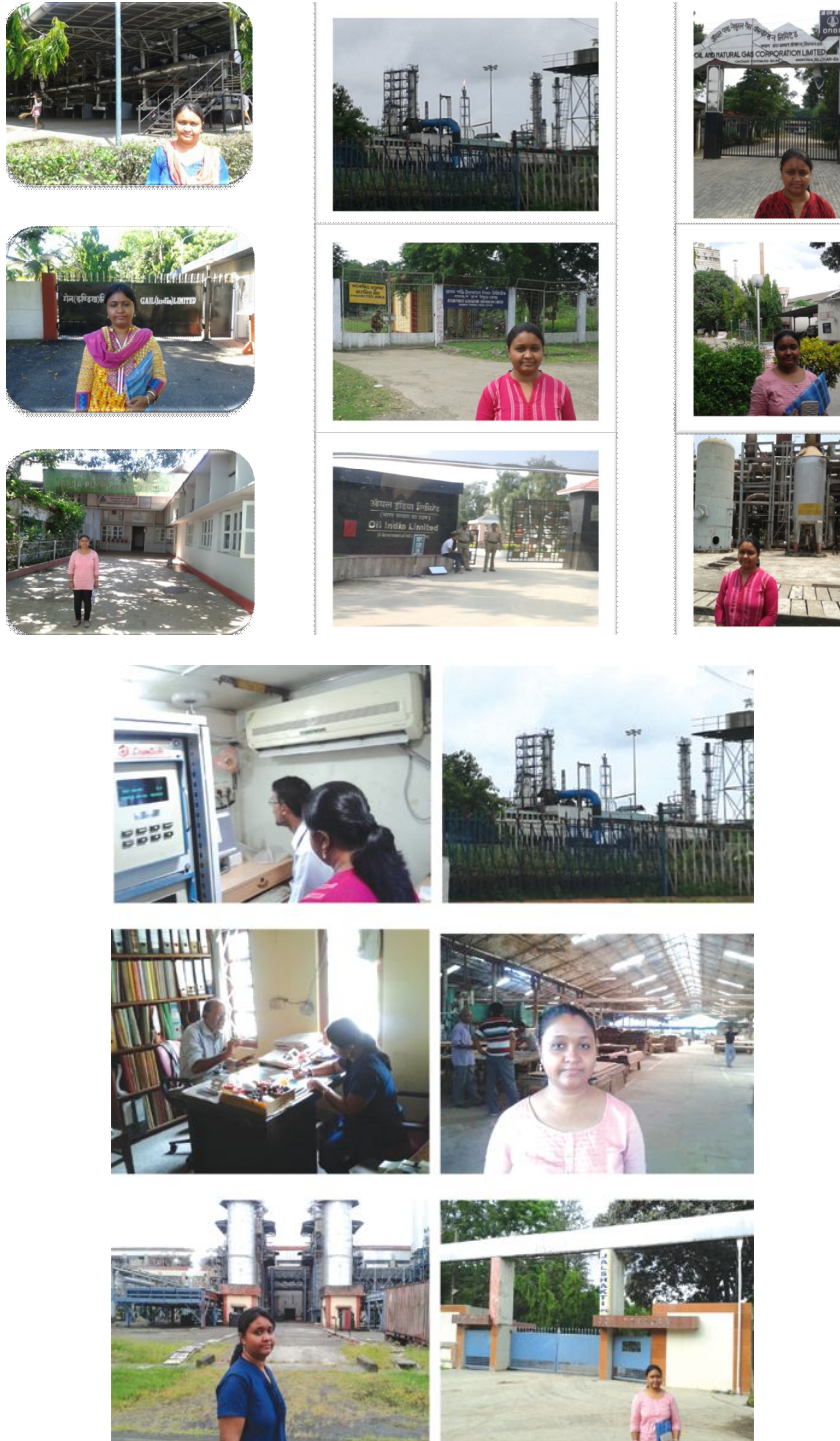


Appendix III

Photographs

Plate 1: Field visit to different industrial units of Assam



Appendix IV

Display of Corporate Environmental Policy



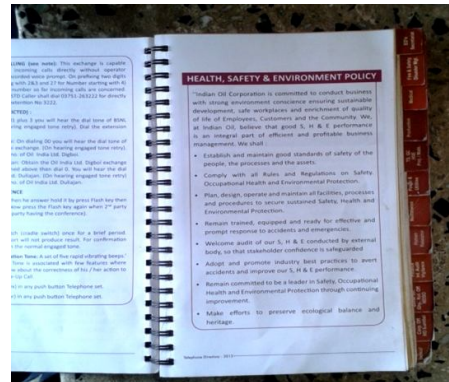
OIL



ICL



GGL-Koomber Tea Garden



IOCL - Digboi Refinery



APL



BVFL



NEEPCO

Appendix V

Coding of industries

Code	Industry
A	Cement
B	Fertilizer
C	Oil Refinery
D	Petrochemicals
E	Pulp and Paper
F	Power (Thermal Power)
G	Coal
H	Petroleum and Natural Gas
I	Plywood
J	Tea

Coding of Companies

Code	Companies
A1	Cement Corporation of India
A2	Vinay Cements Ltd.
A3	Barak Valley Cements Ltd.
B1	Brahmaputra Valley Fertilizer Corporation Ltd.
C1	Indian Oil Corporation Ltd., Unit 1- Digboi Refinery Unit 2- Guwahati Refinery
C2	Unit 3- Bongaigaon Refinery (Earlier Bongaigaon Refinery and Petrochemicals Ltd.)
C3	Numaligarh Refinery Ltd.
D1	Assam Petrochemicals Ltd.
E1	Hindustan Paper Corporation Ltd.
F1	Assam Power Generation Company Ltd.(Namrup Thermal Power)
F2	North Eastern Electric Power Corporation Ltd. (Assam Gas Based Power Plant)
G1	Coal India Ltd.
H1	Oil India Ltd.
H2	Oil and Natural Gas Corporation Ltd.
H3	India Carbon Ltd.
H4	Assam Gas Company Ltd
H5	Assam Carbon Products Ltd.
H6	Gas Authority of India
I1	Kitply Industries
I2	Sarada Plywood Industries
J1	Assam Company India Ltd.
J2	Dhunseri Tea and Industries Ltd.
J3	Jay Shree Tea and Industries Ltd.
J4	Goodricke Group Ltd.
J5	Tata Global Beverages Ltd

Appendix VI

Summarized Averaged Environmental Disclosure, Profitability, Debt-equity, Liquidity and Size (Log of total assets) of sample companies under industry groups in Assam

Sl. No.	Code	Companies	Environmental Disclosure	Profit-ability	Debt-equity	Liquidity	Size (Log of total assets)
1	A1	CCI	4.00	0.05	0.83	1.69	6.72
2	A2	VCL	3.00	0.18	0.19	0.97	4.48
3	A3	BVCL	5.00	0.05	0.52	0.73	4.83
4	B1	BVFCL	9.60	-0.11	0.84	1.97	6.87
5	C1	IOCL	4.00	0.07	0.99	0.77	11.49
6	C2	Bongaigaon Refinery (earlier BRPL) - IOCL	11.00	0.04	0.05	0.20	1.46
7	C3	NRL	8.00	0.09	0.03	1.01	7.97
8	D1	APL	2.00	0.01	0.28	3.80	4.36
9	E1	HPCL	5.00	-0.03	0.00	1.13	6.64
10	F1	APGCL	0.80	0.02	0.16	1.39	5.85
11	F2	NEEPCO	3.00	0.05	0.78	2.13	8.58
12	G1	CIL - NEC	5.80	0.24	0.09	2.77	9.79
13	H1	OIL	8.60	0.20	0.12	2.55	9.44
14	H2	ONGC	6.20	0.15	0.17	1.34	11.50
15	H3	ICL	2.40	0.12	1.20	2.04	4.07
16	H4	AGCL	1.00	0.14	0.35	3.10	5.63
17	H5	ACL	1.00	0.14	1.56	1.21	3.56
18	H6	GAIL	8.80	0.17	0.12	1.16	9.84
19	I1	KIL	1.60	0.06	-0.02	0.55	3.00
20	I2	SPL	1.00	-0.01	0.77	1.12	3.96
21	J1	ACIL	1.00	0.02	1.67	1.01	6.75
22	J2	DTIL	3.40	0.08	0.59	0.67	6.33
23	J3	JTIL	3.60	0.06	1.09	0.81	6.18
24	J4	GGL	4.60	0.22	0.31	1.34	5.02
25	J5	TGBL	3.80	0.11	0.30	0.86	7.84

Source: Company's Annual Report & Corporate Website.